

INDIVIDUAL PATHWAY PLANNING

Large
Print



Department of
Education

Year 11



Pathway planning enables you to explore, identify and evaluate the learning and work pathways available, to recognise opportunities, make connections and prepare for transitions.

Individual Pathway Planning provides the opportunity for you to discover personal interests, skills, influences and abilities and to make connections between these and your environment.

Profile

MY NAME

DATE

SCHOOL

myfuture.edu.au provides a platform for reviewing your skills, interests and values. These continue to change over time. Complete the quizzes (or one provided by your teacher). Compare results and reflect. These will build a profile over time.

My Career

Give yourself a definition of what success might look like.

What am I
trying to
accomplish?

If all things go
perfectly, what
might it look like?

What do
I do next?

Reflect on changes (if any) you have noticed in your attitude, interests, learning experiences and skills gained since last year.

Career Quiz

Three new skills you think you have gained	Three new/or developing learning experiences	Three new/or developing interests	How has your attitude or feelings changed?
1			
2			
3			

It is important to reflect on your own personal values.
Highlight the values that are important to you now.

My Career

Give yourself a definition of what success might look like.

Duty	Growth	Joy
Home	Trust	Discipline
Respect	Involvement	Freedom
Safety	Strength	Communication
Order	Compassion	Empathy
Teamwork	Greatness	Change
Work	Challenge	Leadership
Vision	Courtesy	Learning
Health	Justice	Fun
Friendship	Status	Success
Autonomy	Honesty	Curiosity
Fairness	Balance	Authenticity
Excellence	Purpose	Wisdom
Decisiveness	Environment	Perfection
Power	Education	Community
Individuality	Winning	Personal
Nature	Happiness	Development
Faith	Fame	Independence
Achievement	Innovation	Money
Country	Risktaking	Beauty
Dignity	Loyalty	Quality

What are your top three or four values now?

Why are these important to you at this time of your life?

Values

KNOW YOURSELF AND FOLLOW YOUR HEART

What are your top three or four values now?

Why are these important to you at this time of your life?

1

2

3

4

ACCESS YOUR ALLIES

Who are the most important people in your life? List them.

Why are these people important to you?

1

2

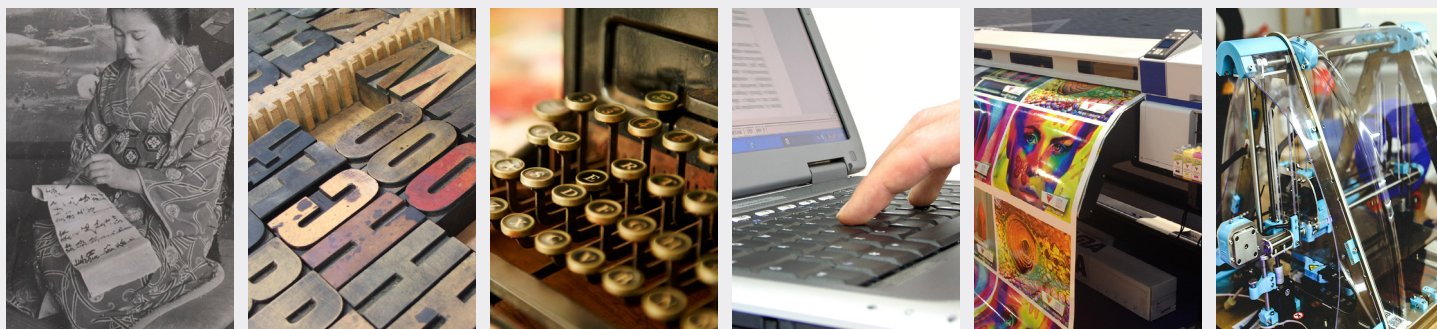
3

4

Consider work you do now or have done recently – workplace learning, paid casual work, volunteering in the community, responsibilities at home or in a family business and work in school. What are some of your experiences in these areas?

How quickly industry changes

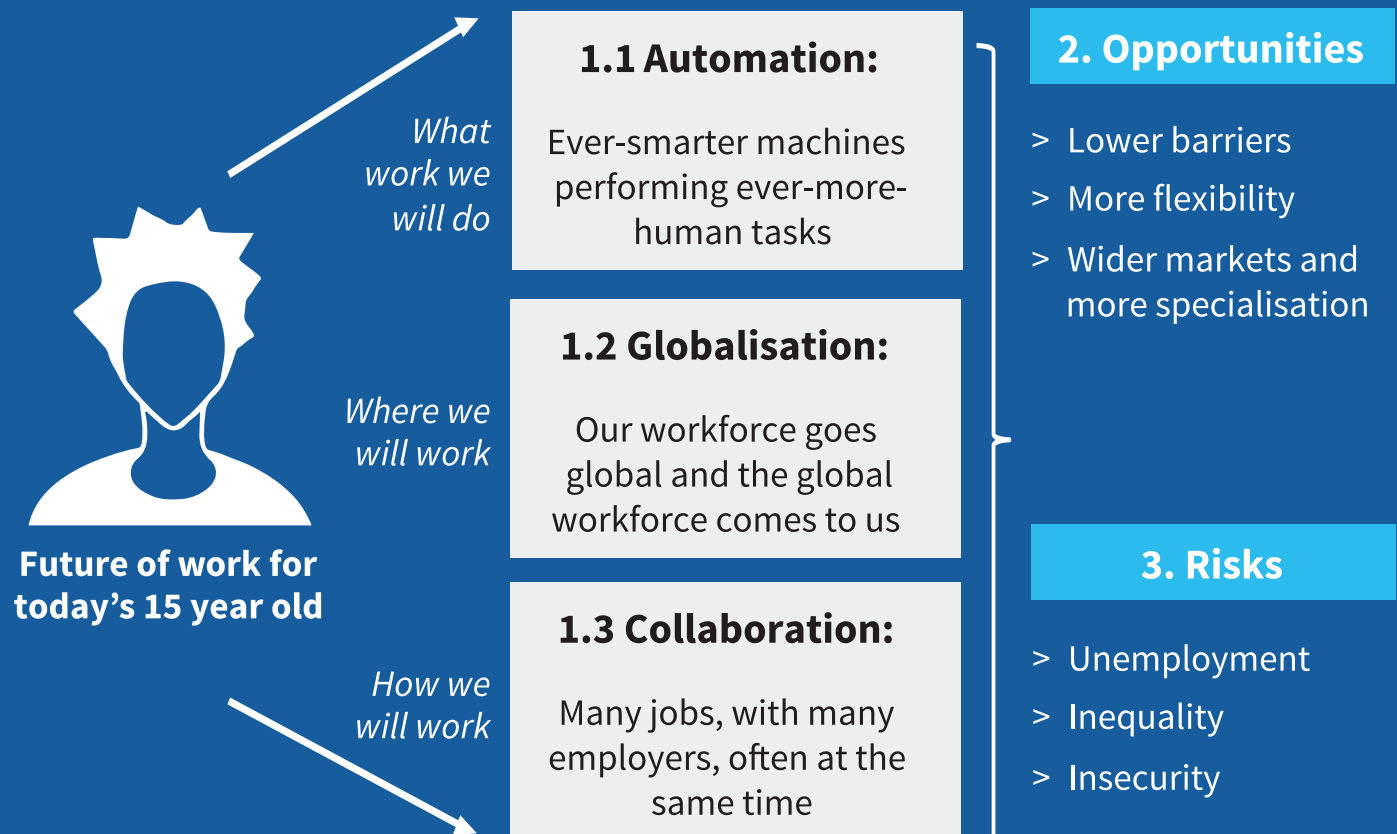
Consider the advances in the communication and the printed word, from illuminated manuscript, to moveable type, to personal typewriters, then desktop publishing platforms, small run digital print technology and the rise of 3D printers...



Work context	List some work experiences that you have had. What jobs or tasks were involved?	How do these experiences help you decide about your future planning?

The [Foundations for Young Australians](#) (FYA) provides important research about how disruption to the world of work has significant implications for young Australians.

Future opportunities and risk

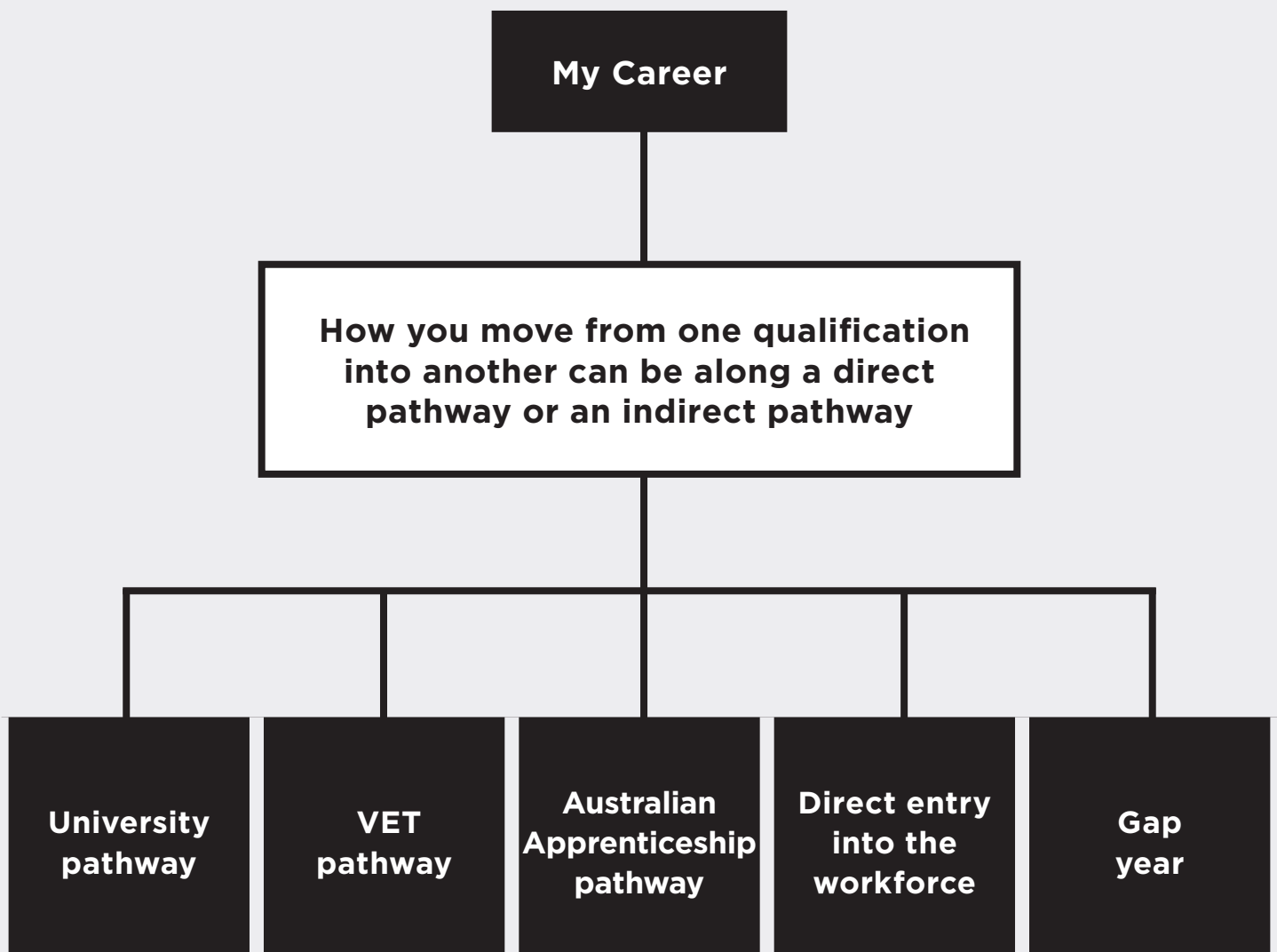


Consider changes in the future world of work and identify the capabilities you might need to successfully engage with, navigate and advance in life and work.

Future opportunities and risk

Changes to:	Economic Forces	Knowledge, skills and capabilities needed
The type of work that we do	Automation Ever-smarter machines performing ever-more-human tasks	
Where we do that work	Globalisation Our workforce goes global and the global workforce comes to us	
How we do that work	Collaboration Many jobs, with many employers, often at the same time	

Websites such as myfuture.edu.au and JobOutlook.gov.au and myskills.gov.au provide information which supports pathway planning activities including details of the levels of training or higher education required for occupations.



Understanding these options is essential for you to successfully plan and manage your career

Understanding these options is essential for you to successfully plan and manage your career.

Which pathway are you considering at this point in time?	Attributes needed	Skills needed	What I need to get there School results and qualifications	Pathways direct or indirect
1 Qualification, or employment pathway you are considering:				

The job market of the future will come from jobs that robots cannot do.

Which pathway are you considering at this point in time?	Attributes needed	Skills needed	What I need to get there School results and qualifications	Pathways direct or indirect
2 Qualification, or employment pathway you are considering:				
3 Qualification, or employment pathway you are considering:				

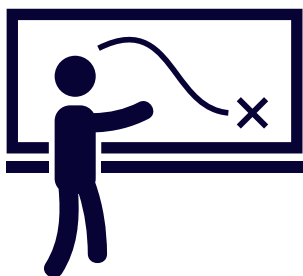
REFLECTION & REVIEW

Using your last report, achievement data and other feedback comments, consider whether you are meeting your goals at school.

Courses or programs I am studying this year	Results/Grade Am I on track? YES / NO	What do I need to do to get on track, or to stay on track? Action/Strategy Needed

VET qualifications	Proportion of units completed this year? For example: 4/12	What do I need to do to get on track, or to stay on track? Action/Strategy Needed

OLNA results	Current achievement category	Action needed?
Reading category		
Writing category		
Numeracy category		



An action plan describes how you will use strategies to meet your objective. It is important to remember that an action plan is always a 'work in progress'.

Plan

	Start Date:	Review Date:
	Describe	Add any revisions to this plan
What achievement or change do you want to bring about?		
Why is this important to you now?		
What do you know about yourself that will affect this plan? What strengths and skills will you need to action your plan?		
What other barriers/ challenges may stop you from progressing your plan?		
Who could support you? Why would you choose this person?		

Keep it visible and review it regularly in light of your changing needs, new opportunities and chance happenings.

	Start Date:	Review Date:
	Describe	Add any revisions to this plan
Who else could support you? Why would you choose this person?		
What resources do you need to action your plan?		

Next steps

Next steps	Help / Resources that you need	By when	Track/ Achievement
1			
2			
3			
4			



What's in my portfolio?

What's in my portfolio?	I have this	Need to follow up with...	By when
Up-to-date resume			
Cover letter (sample)			
Details of two referees			
Examples of my best work samples — photographs, media, writing, presentations			
Individual pathway plan			
Certificates and awards			
Nationally recognised qualification(s) (VET Certificates)			
WorkSafe SmartMove Certificates			
Workplace learning supervisor's report			
Workplace learning logbook			

What's in my portfolio?	I have this	Need to follow up with...	By when
Employer reference letter			
Personal reference letter			
Formal training (White Card, RSA, Barista, First Aid)			
Infection control, Foodsafe, Coaching, swim, surf lifesaving certificate			
Tax File Number			
Unique student identifier			
Fair work training certificates			

A useful resource

The School Curriculum and Standards Authority [Year 12 Information Handbook](#) provides you with information and advice about the final year of school.

Comments	
From parents, family members, community members, carers, guardians or other trusted adults.	Date completed:

Comments

Your mentor/teacher

**Date
completed:**

Your parent/guardian

**Date
completed:****Student Signature**



Development of this Individual Pathway Planning resource has been guided and informed by the:

Australian Blueprint for Career Development,
Commonwealth of Australia, 2010

Western Australian Guidelines for Career Development
and Transitions, Commonwealth of Australia, 2012

* FYA (Foundation for Young Australians) (2015) The
New Work Order: ensuring young Australians have
skills and experience for the jobs of the future not the
past. Foundation for Young Australians: Melbourne.

Photograph of 'Japanese woman writing' from the State
Library of Victoria historical images collection
(www.slv.vic.gov.au) by George Rose.

All location photography
used in this booklet was shot in
Perth, Western Australia.