



*ant*



*bat*



*ball*



*cat*



B b

b a t



Department of Education

LITK2TL000  
PHONICS FOR TEACHING AND LEARNING  
ALPHABET GRAPHEMES | FLASH CARDS  
© Department of Education 2017



A a

a n t



Department of Education

LITK2TL000  
PHONICS FOR TEACHING AND LEARNING  
ALPHABET GRAPHEMES | FLASH CARDS  
© Department of Education 2017



C c

c a t



Department of Education

LITK2TL000  
PHONICS FOR TEACHING AND LEARNING  
ALPHABET GRAPHEMES | FLASH CARDS  
© Department of Education 2017



B b

b a l l



Department of Education

LITK2TL000  
PHONICS FOR TEACHING AND LEARNING  
ALPHABET GRAPHEMES | FLASH CARDS  
© Department of Education 2017





can



dog



egg



fan



D d

d o g



LITK2TL000  
PHONICS FOR TEACHING AND LEARNING  
ALPHABET GRAPHEMES | FLASH CARDS  
© Department of Education 2017



C c

c a n



LITK2TL000  
PHONICS FOR TEACHING AND LEARNING  
ALPHABET GRAPHEMES | FLASH CARDS  
© Department of Education 2017



F f

f a n



LITK2TL000  
PHONICS FOR TEACHING AND LEARNING  
ALPHABET GRAPHEMES | FLASH CARDS  
© Department of Education 2017



E e

e g g



LITK2TL000  
PHONICS FOR TEACHING AND LEARNING  
ALPHABET GRAPHEMES | FLASH CARDS  
© Department of Education 2017







girl



goanna



hen



insects



G g

g o a n n a



Department of Education

LITK2L000  
PHONICS FOR TEACHING AND LEARNING  
ALPHABET GRAPHEMES | FLASH CARDS  
© Department of Education 2017



G g

g i r l



Department of Education

LITK2L000  
PHONICS FOR TEACHING AND LEARNING  
ALPHABET GRAPHEMES | FLASH CARDS  
© Department of Education 2017



I i

i n s e c t s



Department of Education

LITK2L000  
PHONICS FOR TEACHING AND LEARNING  
ALPHABET GRAPHEMES | FLASH CARDS  
© Department of Education 2017



H h

h e n



Department of Education

LITK2L000  
PHONICS FOR TEACHING AND LEARNING  
ALPHABET GRAPHEMES | FLASH CARDS  
© Department of Education 2017







*jellybeans*



*kangaroo*



*light*



*mat*



K k

k a n g a r o o



LITK2L000  
PHONICS FOR TEACHING AND LEARNING  
ALPHABET GRAPHEMES | FLASH CARDS  
© Department of Education 2017



J j

j e l l y b e a n s



LITK2L000  
PHONICS FOR TEACHING AND LEARNING  
ALPHABET GRAPHEMES | FLASH CARDS  
© Department of Education 2017



M m

m a t



LITK2L000  
PHONICS FOR TEACHING AND LEARNING  
ALPHABET GRAPHEMES | FLASH CARDS  
© Department of Education 2017



L l

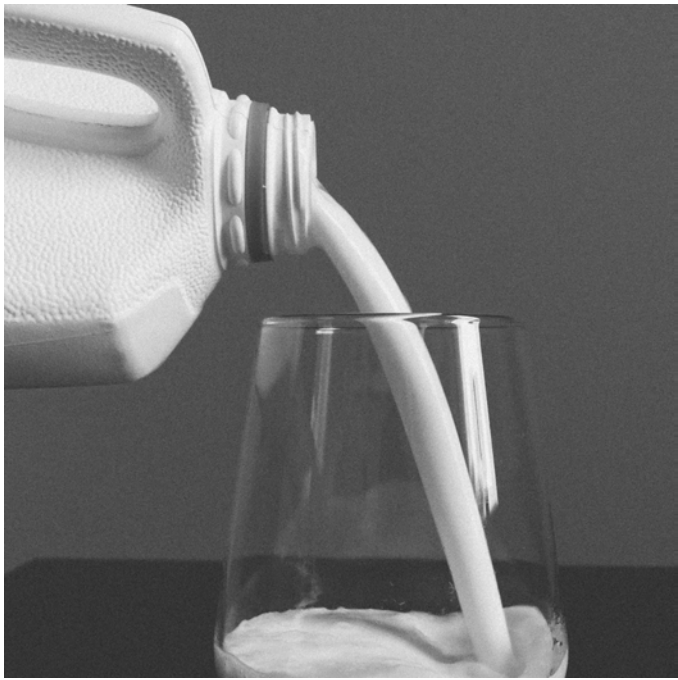
l i g h t



LITK2L000  
PHONICS FOR TEACHING AND LEARNING  
ALPHABET GRAPHEMES | FLASH CARDS  
© Department of Education 2017







*milk*



*nose*



*net*



*orange*



N n

n o s e



Department of Education

LITK2TL000  
PHONICS FOR TEACHING AND LEARNING  
ALPHABET GRAPHEMES | FLASH CARDS  
© Department of Education 2017



PHONICS  
TOOLKIT



M m

m i l k



Department of Education

LITK2TL000  
PHONICS FOR TEACHING AND LEARNING  
ALPHABET GRAPHEMES | FLASH CARDS  
© Department of Education 2017



PHONICS  
TOOLKIT



O o

o r a n g e



Department of Education

LITK2TL000  
PHONICS FOR TEACHING AND LEARNING  
ALPHABET GRAPHEMES | FLASH CARDS  
© Department of Education 2017



PHONICS  
TOOLKIT



N n

n e t



Department of Education

LITK2TL000  
PHONICS FOR TEACHING AND LEARNING  
ALPHABET GRAPHEMES | FLASH CARDS  
© Department of Education 2017



PHONICS  
TOOLKIT





pen



pie



pink



quokka





P p

p ie



LITK2TL000  
PHONICS FOR TEACHING AND LEARNING  
ALPHABET GRAPHEMES | FLASH CARDS  
© Department of Education 2017



P p

p e n



LITK2TL000  
PHONICS FOR TEACHING AND LEARNING  
ALPHABET GRAPHEMES | FLASH CARDS  
© Department of Education 2017



Q q

qu o k k a



LITK2TL000  
PHONICS FOR TEACHING AND LEARNING  
ALPHABET GRAPHEMES | FLASH CARDS  
© Department of Education 2017



P p

p i n k



LITK2TL000  
PHONICS FOR TEACHING AND LEARNING  
ALPHABET GRAPHEMES | FLASH CARDS  
© Department of Education 2017





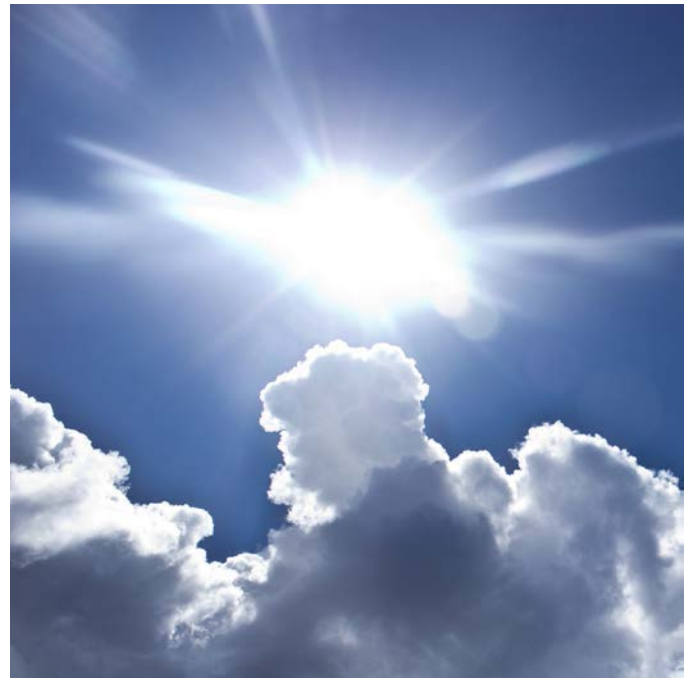
queen



rat



rock



sun



R r

r a t



Department of Education

LITK2TL000  
PHONICS FOR TEACHING AND LEARNING  
ALPHABET GRAPHEMES | FLASH CARDS  
© Department of Education 2017



Q q

q u e e n



Department of Education

LITK2TL000  
PHONICS FOR TEACHING AND LEARNING  
ALPHABET GRAPHEMES | FLASH CARDS  
© Department of Education 2017



S s

s u n



Department of Education

LITK2TL000  
PHONICS FOR TEACHING AND LEARNING  
ALPHABET GRAPHEMES | FLASH CARDS  
© Department of Education 2017



R r

r o c k



Department of Education

LITK2TL000  
PHONICS FOR TEACHING AND LEARNING  
ALPHABET GRAPHEMES | FLASH CARDS  
© Department of Education 2017







tap



tent



tree



umbrella



T t

t e n t



LITK2L000  
PHONICS FOR TEACHING AND LEARNING  
ALPHABET GRAPHEMES | FLASH CARDS  
© Department of Education 2017



T t

t a p



LITK2L000  
PHONICS FOR TEACHING AND LEARNING  
ALPHABET GRAPHEMES | FLASH CARDS  
© Department of Education 2017



U u

u m b r e l l a



LITK2L000  
PHONICS FOR TEACHING AND LEARNING  
ALPHABET GRAPHEMES | FLASH CARDS  
© Department of Education 2017



T t

t r e e



LITK2L000  
PHONICS FOR TEACHING AND LEARNING  
ALPHABET GRAPHEMES | FLASH CARDS  
© Department of Education 2017







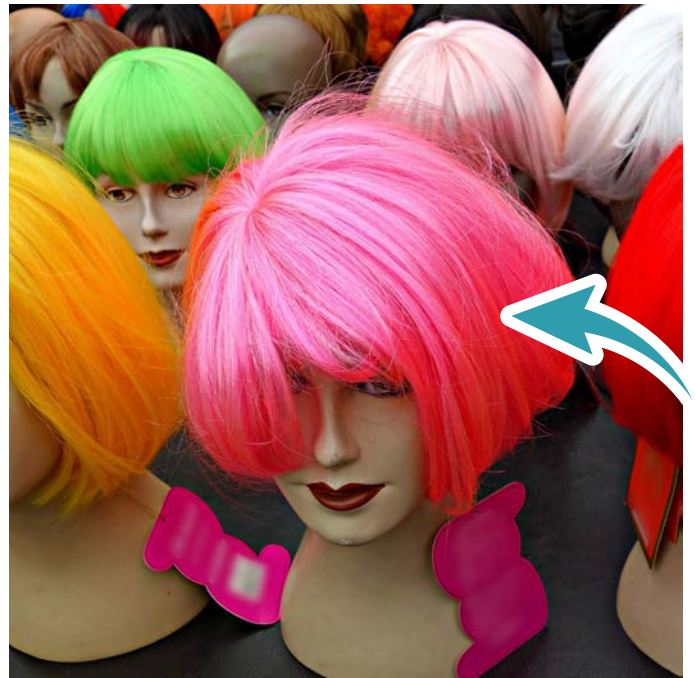
umpire



van



window



wig





V v

v a n



LITK2L000  
PHONICS FOR TEACHING AND LEARNING  
ALPHABET GRAPHEMES | FLASH CARDS  
© Department of Education 2017



U u

u m p i r e



LITK2L000  
PHONICS FOR TEACHING AND LEARNING  
ALPHABET GRAPHEMES | FLASH CARDS  
© Department of Education 2017



W w

w i g



LITK2L000  
PHONICS FOR TEACHING AND LEARNING  
ALPHABET GRAPHEMES | FLASH CARDS  
© Department of Education 2017



W w

w i n d o w

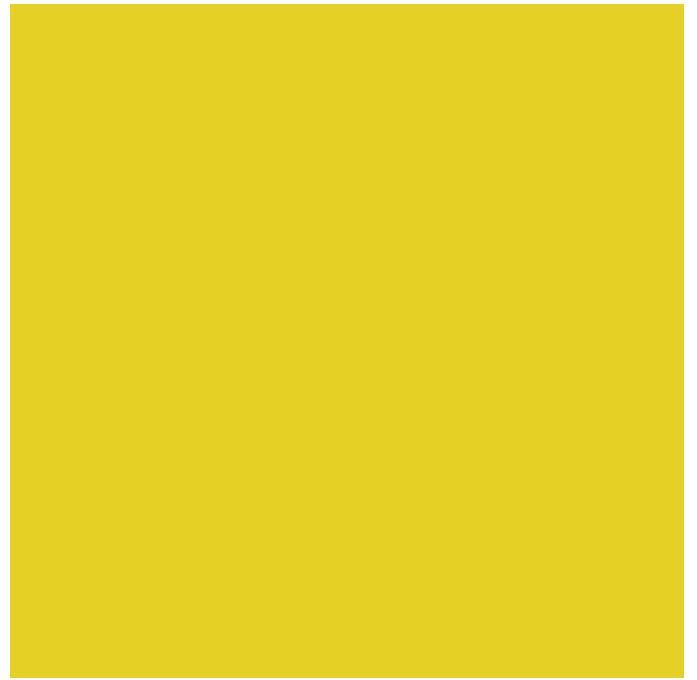


LITK2L000  
PHONICS FOR TEACHING AND LEARNING  
ALPHABET GRAPHEMES | FLASH CARDS  
© Department of Education 2017





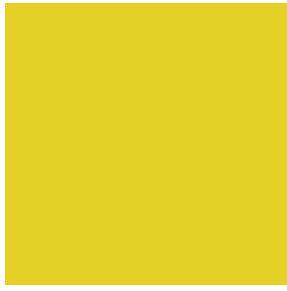
box



yellow



zip



Y y

y e ll ow



Department of Education

LITK2L000  
PHONICS FOR TEACHING AND LEARNING  
ALPHABET GRAPHEMES | FLASH CARDS  
© Department of Education 2017



X x

x o x



Department of Education

LITK2L000  
PHONICS FOR TEACHING AND LEARNING  
ALPHABET GRAPHEMES | FLASH CARDS  
© Department of Education 2017



Z z

z i p



Department of Education

LITK2L000  
PHONICS FOR TEACHING AND LEARNING  
ALPHABET GRAPHEMES | FLASH CARDS  
© Department of Education 2017

